

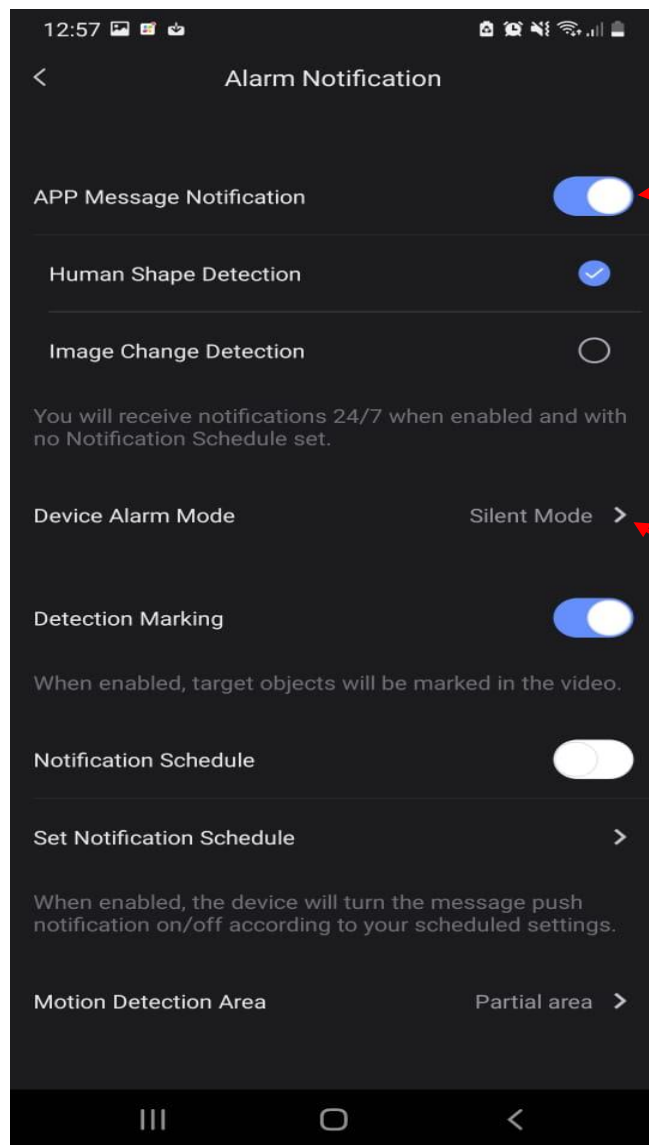


EZVIZ

**C3W Pro (4MP)
Alarm
Notification
Guide**



Unlike C3W and C3X, C3W Pro 4MP comes with new special separated functions

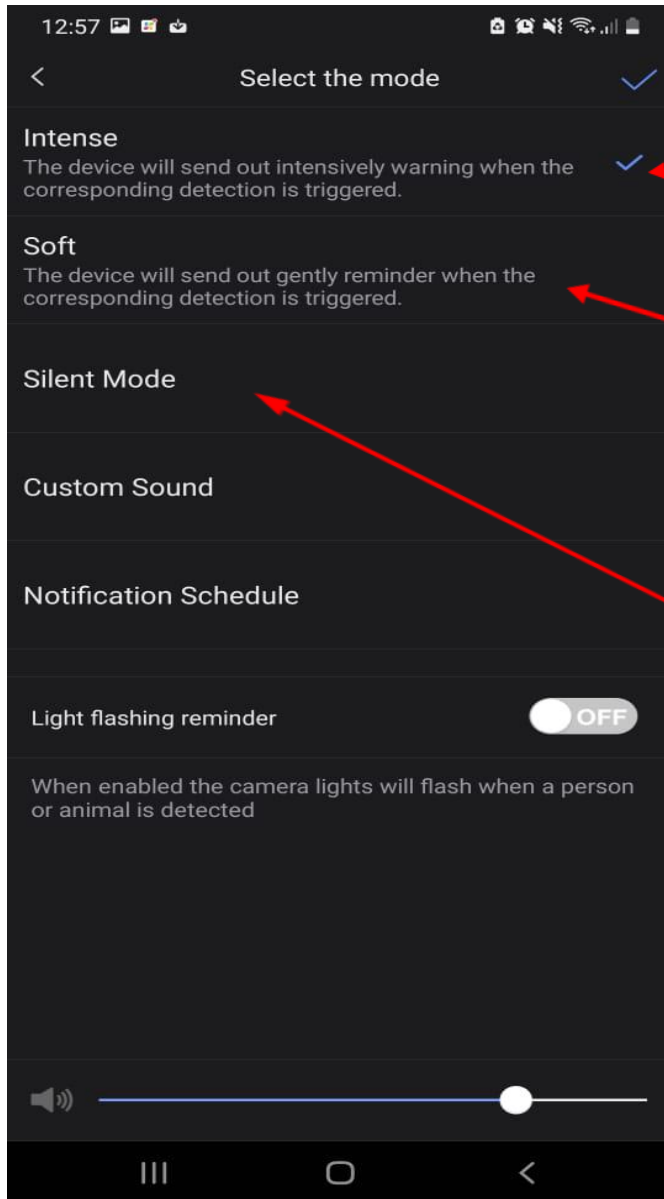


When alarm notification is enabled, Basically, it will send the push notification To the smart phone.

Note that, the Alarm notifications is not the siren sound. The Siren Sound will only be active if intense is enabled from Device Alarm Mode

- 1. When the Device Alarm Mode is on Silent mode, the camera won't produce any sound when it picks up the movement.**
- 2. When the Device Alarm Mode is on Intense Mode, the camera will always produce sound when it picks up the movement.**

Device Alarm Mode is where the Camera sound is set.



When the Intense is enabled, the camera will always send out the Loud warning sound (even when Alarm notification is disabled)

When the Soft mode is enabled, the camera will always send out a Gently warning sound (even when Alarm notification is disabled)

When the Silent mode is enabled, the camera won't send any (even when Alarm notification is disabled)

Alarm Notification vs Device Sound Mode

Alarm Notification

- Alarm notification is when the camera send push notification to the smartphone, when the movement is triggered
- Alarm notification is not siren

Device Sound Mode

- Device sound mode is where their sounds are being set.
- When Intense is enabled, it will send out extremely loud sound when the movement is triggered
- When the Silent mode is enabled, no sound will be produced when the movement is triggered