

NEW PRODUCT ARRIVAL

PRODUCT CODE

13BAT-M27-BLC

SPECIFICATION

12V 95AH

DIMENSIONS

L 305 W 171 H 226

WEIGHT

22.4KG

TERMINAL

LAYOUT: 1 (LEFT HAND POSITIVE)

TYPE: DUAL TERMINAL

TECHNOLOGY

SEALED LEAD ACID CALCIUM / CALCIUM DEEP CYCLE

APPLICATIONS

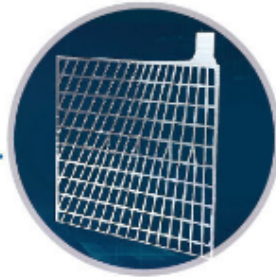
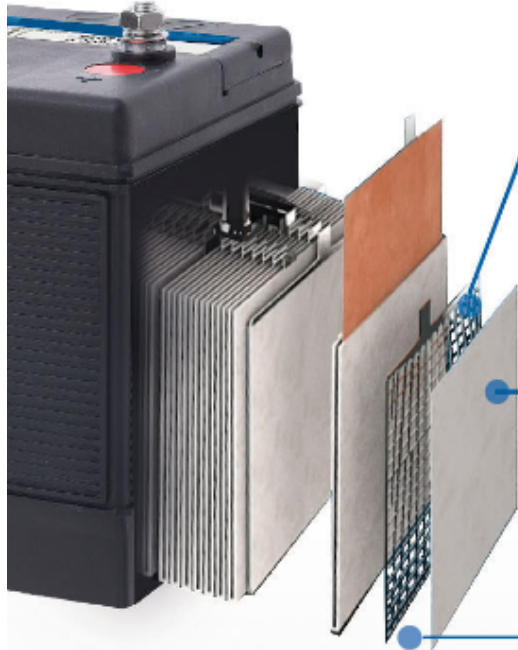
BOATS, CARAVANS, CAMPING, ELECTRIC TROLLING MOTORS, AUXILLARY BATTERY

TARGET MARKET

MARINE AND LEISURE

Key Selling Points

- A.** DEEP CYCLE
- B.** 18 MONTH WARRANTY
- C.** DUAL TERMINALS - LEAD AND THREADED POSTS
- D.** HYDROMETER EYE FOR STATE OF CHARGE
- E.** CONVENIENCE - CARRY HANDLE
- F.** CALCIUM / CALCIUM TECHNOLOGY

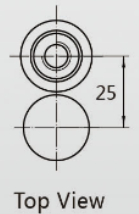
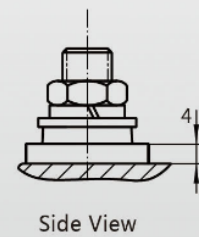
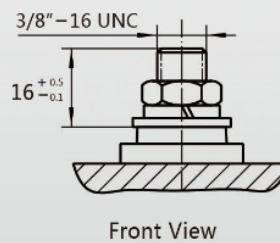
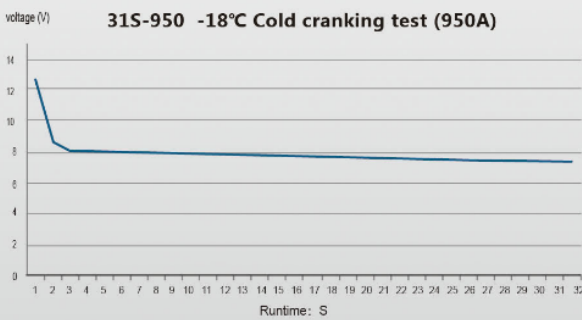
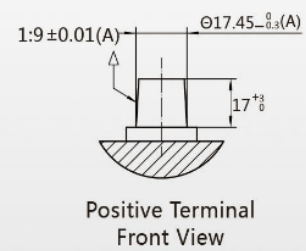
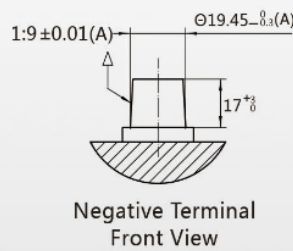
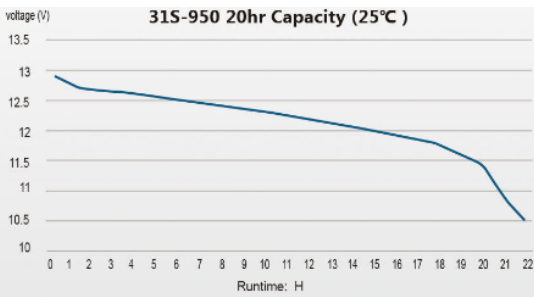


FULL-FRAME
High Efficiency
Grid Design



DUAL-LIFE
Separator

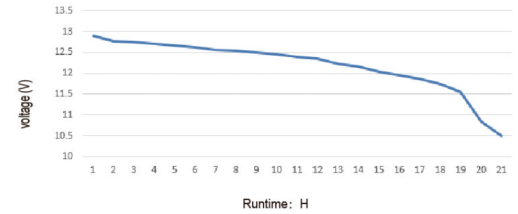
ANCHOR BONDING
PLATE TO THE CASE BOTTOM



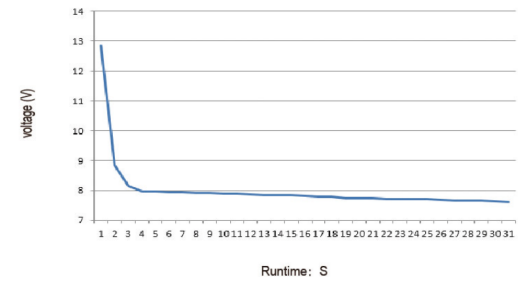
Physical Specifications

Nominal Voltage		12V
Nominal Capacity(20HR)		95Ah
Dimensionv	Length	305±2mm
	Width	171±2mm
	Container Height	199.5±2mm
	Total Height(with Terminal)	226±2mm
Weight		22.4±1kg
Standard Terminal		12
Cell Layout		1
Hold-Down		B1
Color		Black
Case		PP
Lid		PP
Handle		PP
Acid Density		1.295±0.005g/ml

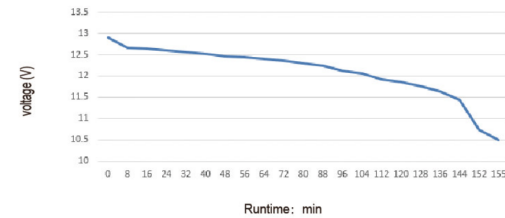
20hr Capacity (25°C)



-18°C Cold Cranking Test (760A)



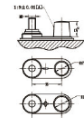
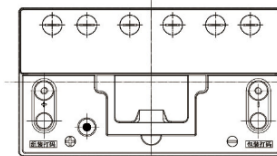
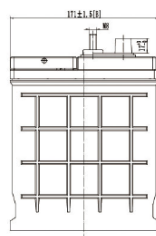
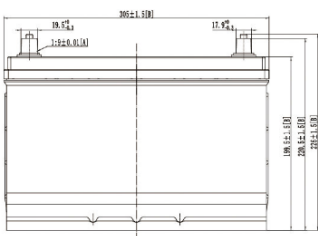
RC Capacity (25°C)



Electrical Specifications

Rated Capacity (20 hour rate)	95Ah
Reserve Capacity	170min
Cold Cranking Performance Amps@-18 °C	760CCA

Dimensions



Cell Layout

